

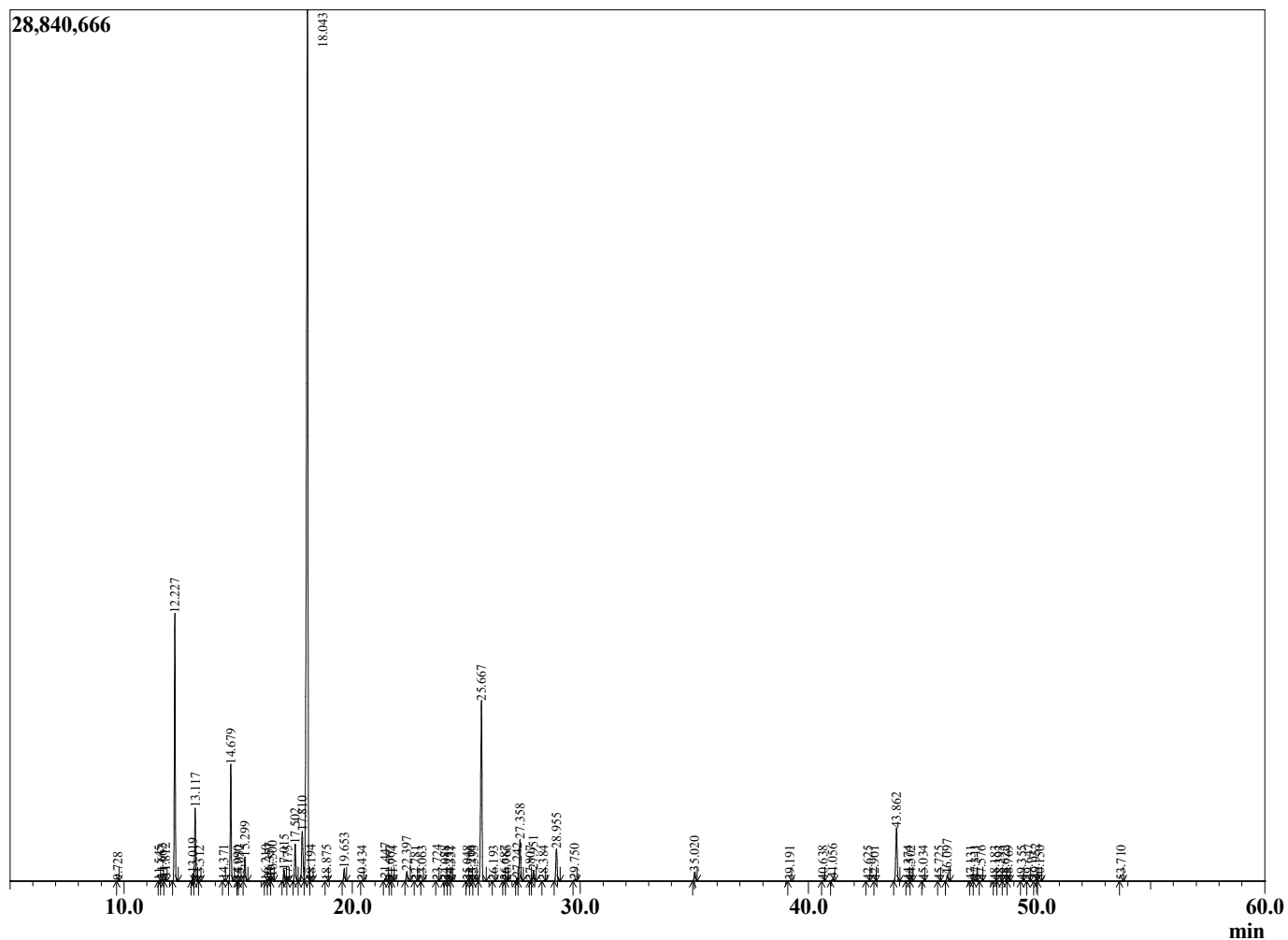
Sample Information

Sample Type : Essential Oil
 Sample Name : Rosmarinus officinalis
 Injection Volume : 0.10

Rosemary Cineole
 Lot# MOD36-DH
 Country: Morocco



Chromatogram Rosmarinus officinalis



R.Time	Name	Area%
9.728	Unidentified	0.00
11.545	Hashishene	0.02
11.662	Tricyclene	0.07
11.812	alpha-Thujene	0.12
12.227	alpha-Pinene	10.65
13.019	alpha-Fenchene	0.30
13.117	Camphene	3.00
13.312	Thuja-2,4(10)-diene	0.01
14.371	Sabinene	0.05
14.679	beta-Pinene	4.93
14.990	Camphene	0.01
15.052	3-Octanone	0.02
15.299	Myrcene	1.07
16.210	Pseudolimonene	0.04
16.357	alpha-Phellandrene	0.14
16.500	delta-3-Carene	0.20
17.015	alpha-Terpinene	0.49
17.175	ortho-Cymene	0.00
17.502	para-Cymene	1.85
17.810	Limonene	3.00
18.043	1,8-Cineole	53.33
18.194	(Z)-beta-Ocimene	0.04
18.875	(E)-beta-Ocimene	0.02
19.653	gamma-Terpinene	0.60
20.434	trans-Sabinene hydrate	0.02
21.447	Terpinolene	0.13
21.667	Fenchone	0.00
21.774	para-Cymenene	0.02
22.397	Linalool	0.50
22.781	Nonanal	0.00
23.063	Unidentified	0.00
23.724	alpha-Fenchol	0.03
24.088	cis-para-Menth-2-en-1-ol	0.01
24.252	alpha-Campholenal	0.01
24.331	Unidentified	0.00
25.048	Nopinone	0.00
25.206	trans-Pinocarveol	0.02
25.333	trans-para-Menth-2-en-1-ol	0.01
25.667	Camphor	9.87
26.193	Camphene hydrate	0.02
26.687	Unidentified	0.01
26.766	Isoborneol	0.01
27.242	delta-Terpineol	0.15
27.358	Borneol	2.27
27.807	Unidentified	0.01
27.951	Terpinen-4-ol	0.56
28.384	para-Cymen-8-ol	0.02
28.955	alpha-Terpineol	1.74
29.750	Verbenone	0.09
35.020	Bornyl acetate	0.52
39.191	alpha-Cubeben	0.01
40.638	alpha-Ylangene	0.02
41.056	alpha-Copaene	0.11
42.625	Methyleugenol	0.01
42.901	cis-beta-Caryophyllene	0.01
43.862	trans-beta-Caryophyllene	3.13

R.Time	Name	Area%
44.374	Unidentified	0.01
44.502	beta-Copaene	0.01
45.034	Aromadendrene	0.02
45.725	Humulen-(v1)	0.01
46.097	alpha-Humulene	0.37
47.131	Cadina-1(6),4-diene	0.01
47.311	gamma-Murolene	0.07
47.576	alpha-Amorphene	0.01
48.183	beta-Selinene	0.01
48.393	trans-Muurolo-4(14),5-diene	0.01
48.622	alpha-Selinene	0.02
48.769	alpha-Murolene	0.02
49.355	beta-Bisabolene	0.01
49.647	gamma-Cadinene	0.04
49.952	delta-Cadinene	0.10
50.150	cis-Calamenene	0.01
53.710	Caryophyllene oxide	0.03
		100.00